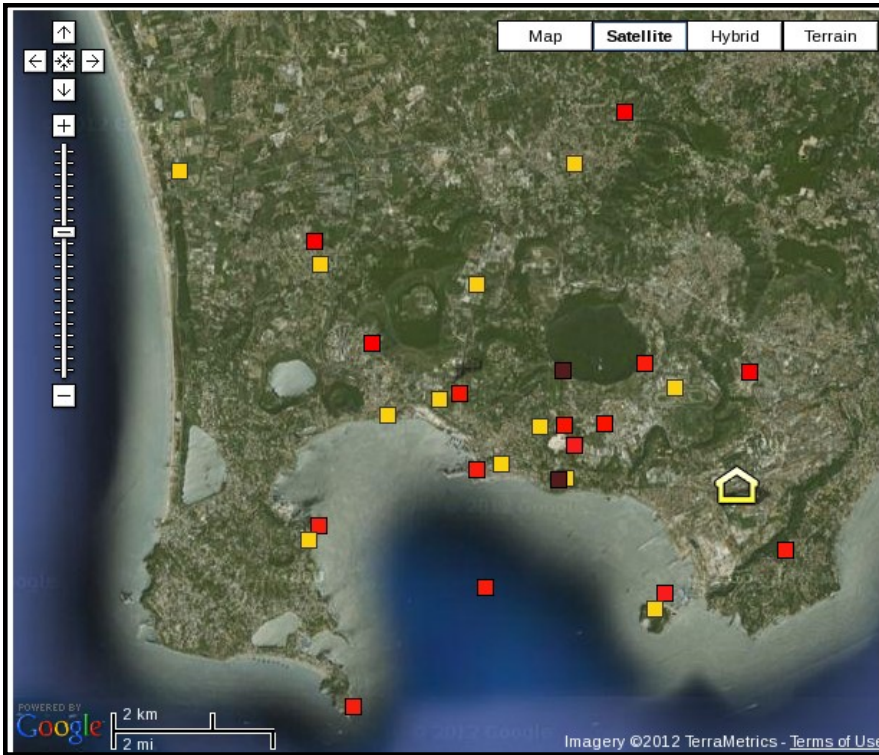


WP 6: MONITORING CAPACITY AT TARGET VOLCANOES

CAMPI FLEGREI, ITALY

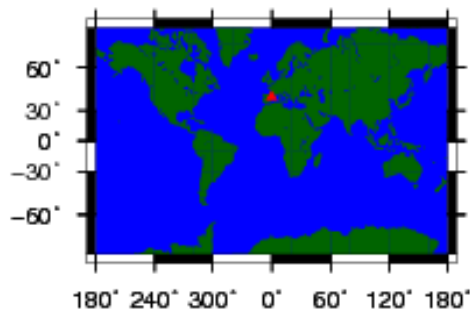


Location of monitoring equipment for Campi Flegrei

Limited co-ordinates were given for stations so map is taken from:

<http://www.ov.ingv.it/ov/en/monitoraggio-flegrei.html>

Red: seismometers, yellow: deformation monitoring, brown: geochemical monitoring



Campi Flegrei	
Broadband Seismometers	17
Short Period Geophones	8
Gas monitoring	3
EDM	-
Continuous GPS	3
Campaign GPS	-
Other	Soil CO2 flux (61 sites) Thermal Imaging Gravimetric stations

Campi Flegrei is located within the Campanian region in Southern Italy and is also known as the Phlegraean Fields. It consists of a 13km wide caldera, which mostly lies underwater, containing at least 24 volcanic edifices.

Campi Flegrei has experienced almost 60 years of unrest including ground movement (bradyseism), seismic swarms, gravity changes and geochemical variations noted at fumeroles.

The caldera of the volcano is located within a heavily populated area, which includes part of the city of Naples. It is estimated that half a million people live inside the Campi Flegrei caldera depression.

The unrest from 1982-1984 caused approximately 1.5m of uplift in the town of Pozzuoli, forcing the evacuation of 40,000 inhabitants.

